



Moving knowledge instead of patients & providers

✉ tb@echoindia.in

🌐 www.echoindia.in

Project ECHO: Empowering TB practitioners with best practices in comprehensive management of MDR-TB

Project ECHO is a lifelong learning and guided practice model that revolutionizes medical education and exponentially increases workforce capacity to provide best-practice specialty care and reduce health disparities.



People need access to specialty care for complex conditions



Not enough specialists to treat everyone, especially in rural India



ECHO® trains primary care clinicians to provide specialty care services

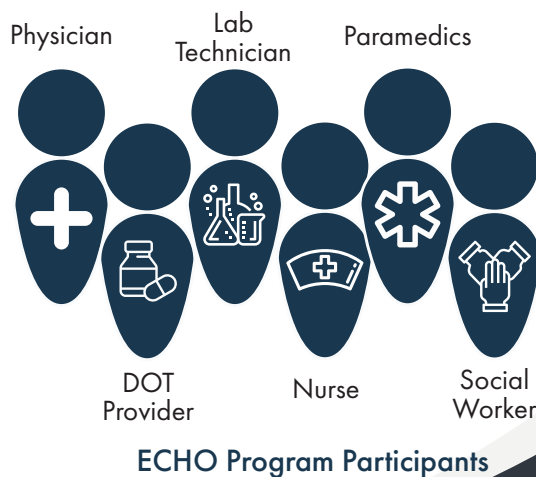
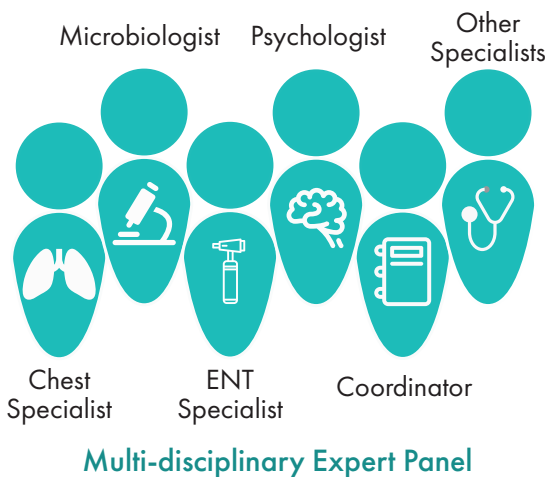


Patients get the right care, in the right place, at the right time.



120+ TB healthcare providers participate in the weekly virtual tele-mentoring sessions conducted by the National Institute of TB and Respiratory Diseases (NITRD)

Multi-disciplinary expert panel mentors participants across the TB ecosystem



The ECHO Model™ uses 4 basic principles:

Automation - Use technology to leverage scarce resources

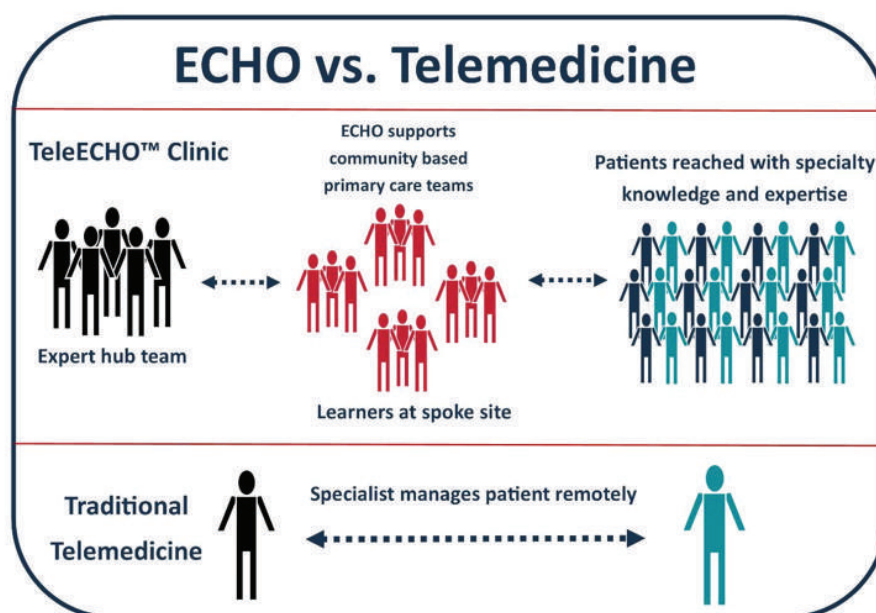


Share **Best practices** to reduce disparity

Case based learning to master complexity

Web based Database to monitor outcomes

The **ECHO model** is not “telemedicine” where the specialist assumes the care of the patient, but instead a mentoring model where the community provider retains responsibility of patient management



Almost all major topics in TB across 5 key pillars have been covered during the ECHO program

Diagnosis

Treatment

TB Updates & Guidelines

Adverse Drug Reactions

Field Issues



The Way Forward: Spreading the TB ECHO program to key states across India

